

TYPE LO

Features

- Manufactured from electrolytic seamless copper tubing
- Compact design
- Range taking
- Re-usable
- Suitable for use in circuits rated 35KV or less, proper high voltage spacing and insulation techniques must be used
- Rated to 90° C

Benefits

- Provides maximum conductivity and strength
- Saves space and reduces installation time
- Permits inventories to be kept to a minimum
- Provides efficient use and flexibility in the field
- Application versatility

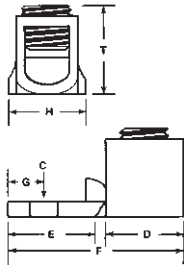


Fig. 1

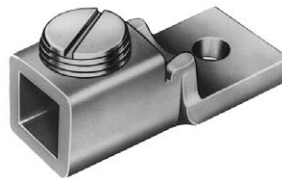


Fig. 2



Fig. 3



Fig. 4

Catalog Number	Figure Number	Bolt Size	Wire Range	Dimensions							Hex Size
				C	D	E	F	G	H	T	
LO-4	1	1/4	4-14	17/64	3/4	5/8	1-3/8	9/32	1/2	25/32	Slot
LO-0	2	1/4	1/0-14	9/32	11/16	27/32	1-3/4	13/32	3/4	11/16	Slot
LO-250	4	5/16	250kcmil-6	21/64	1	1-1/4	2-9/32	7/16	63/64	7/8	3/8
LO-350SH	3	1/2	350kcmil-4	17/32	7/8	1	2-7/32	1/2	1-1/8	1-3/16	3/8
LO-350STD	3	3/8	350kcmil-4	13/32	1-1/4	1-1/8	2-5/8	1/2	1-1/8	1-1/16	3/8
LO-500	4	3/8	500kcmil-4/0	25/64	1-1/4	1-9/16	3-5/16	7/8	1-1/2	1-1/2	3/8
LO-600	4	3/8	600kcmil-1	13/32	1-7/16	1-11/16	3-5/8	7/8	1-1/2	1-1/2	3/8
LO-1000	4	1/2	1000kcmil-500kcmil	17/32	1-17/32	1-7/8	3-15/16	27/32	2	2-1/16	3/8

All wire sizes, unless noted otherwise, are American Wire Gauge (AWG)
Tested to UL 486A/B, UL File E6207